

Making New Worlds

...with the
Emokpaires!

Activities for Families

Inspired by Li Yuan-chia's welcoming of local children to create at the LYC Museum, we are delighted to welcome our first Families-in-Residence to Kettle's Yard.

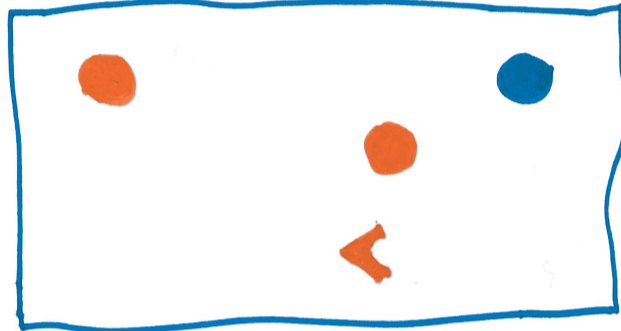
The Emokpaires are a family of four: Kennedy, Soraya, Emikhe and Ebony. They are very much into photography, videography and are highly musical. They also like painting and drawing!

They worked with artist Hannah Kemp-Welch to create this activity booklet for families visiting the exhibition.

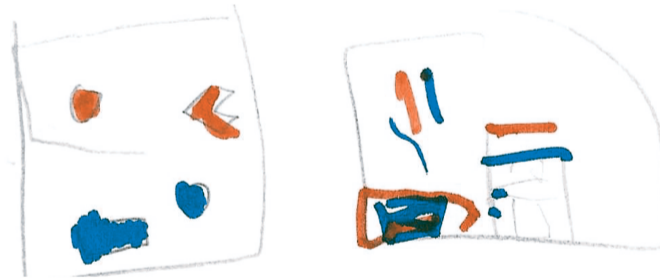
ROOM
1



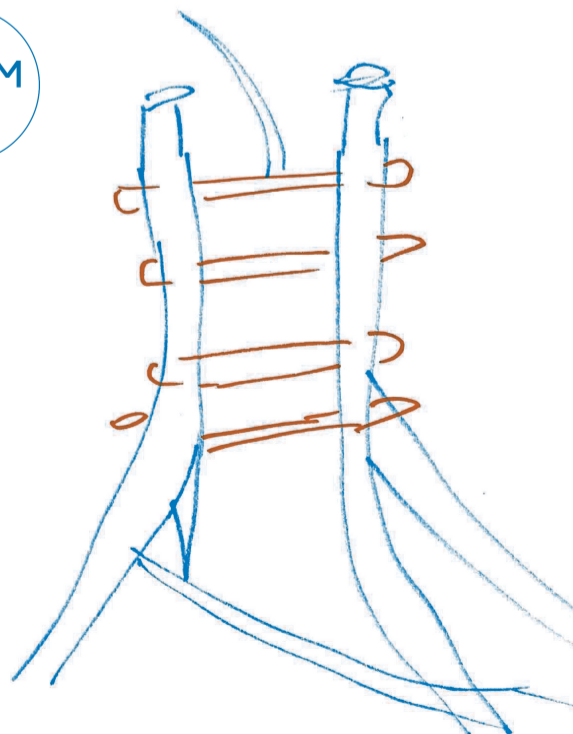
LISTEN TO OUR
INTRODUCTION



DRAW A PICTURE OF
YOUR FAVOURITE
ARTWORK ---->



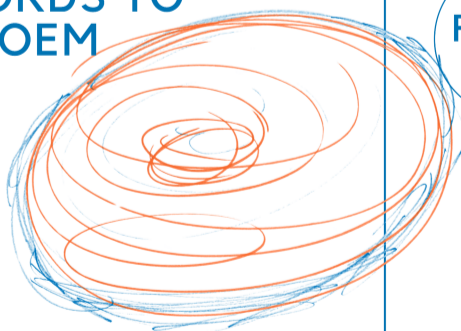
ROOM
2



LISTEN TO OUR
INTRODUCTION



USE THESE WORDS TO
COMPOSE A POEM



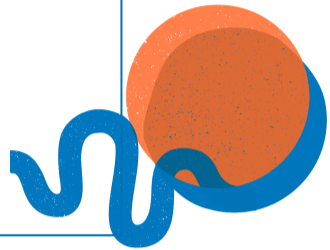
Shapes
Space
Planets
Mirroring
Illumination
Sizes
Cosmic
Mysterious
Illusion
Moon

USE THESE WORDS TO
COMPOSE A POEM

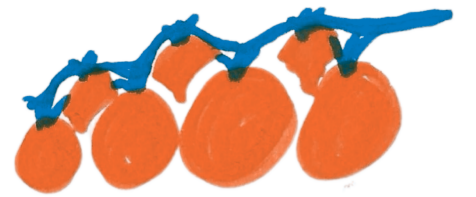
Sounds
Nature
Seasons
Changing
Round
Mixed colours
Patterns
Tranquility
Static
Windows



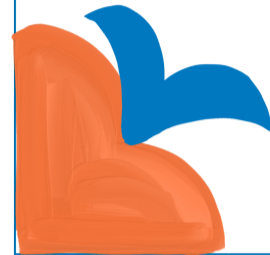
DRAW A PICTURE OF
YOUR FAVOURITE
<---ARTWORK



ROOM
3



LISTEN TO OUR
INTRODUCTION

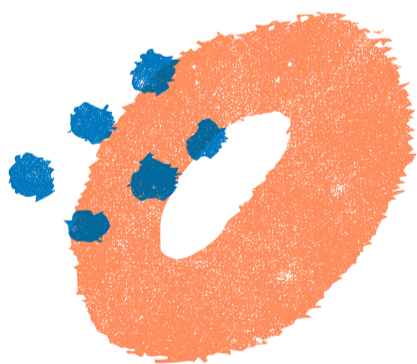
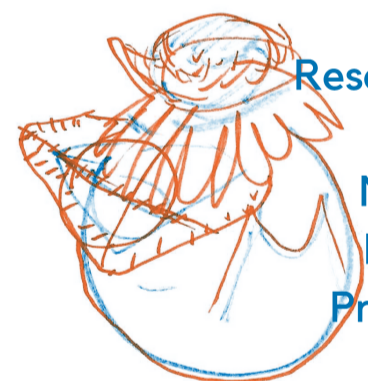


USE THESE WORDS TO
COMPOSE A POEM

DRAW A PICTURE OF
YOUR FAVOURITE
ARTWORK --->



Books
Marbles
Home
Tomatoes
Pans
Resourceful
Recycle
Machine
Random
Projection



Text and drawings by
Kennedy, Soraya, Emikhe
and Ebony Emokpaire.
Risograph design and print by
Hannah Kemp-Welch.
Project produced by
Karen Thomas, Community
Manager at Kettle's Yard.

Voice recordings by
the Emokpaire family.
Sound editing and design by
Hannah Kemp-Welch.
Field recordings courtesy of
Radio Aporee and friends:
Priyadarshini Planetarium in
Kerala, India, recorded by
Gerrit Kalsbeek.
Sugar River Forest Preserve,
Winnebago County, northern
Illinois, recorded by Matt Todd.
Drawing with pencil, recorded by
Hannah Kemp-Welch.
Baking a birthday cake during
lockdown, recording by Lisa Hall.

KETTLE'S YARD



Supported using public funding by
**ARTS COUNCIL
ENGLAND**

